

JAWAPAN KERTAS 2 SET 1

1. $x = -2, y = 0$; $x = -3, y = 4$

2. (a)

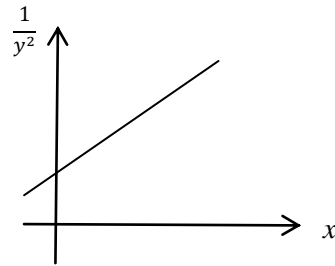
$\frac{1}{y^2}$	1.64	2.78	3.43	4	5.17	5.67
x	0.1	0.3	0.4	0.5	0.7	0.8

$$\frac{1}{y^2} = \frac{1}{r}(x) + \frac{s}{r}$$

(b) (i) $r = 0.16 - 0.18$

(ii) $s = 0.16 - 0.19$

(iii) $y = 0.57$



3. (a) $x = \text{RM}0.60$
 $y = 120$
 $z = \text{RM} 2.00$

(b) 45°

130

(c) $\text{RM} 3846.2$

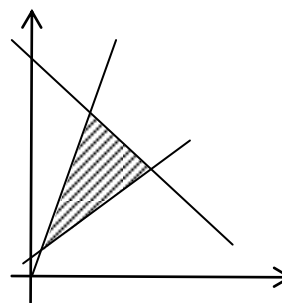
(d) 156

4. (a) (I) $x + y \leq 100$
 (II) $y \leq 4x$
 (III) $y - x \geq 5$

(b) Graf

(c) (i) $35 \leq y \leq 70$

(ii) $\text{RM}5800$



5. (a) $\frac{x}{12} + \frac{y}{8} = 1$

(b) $S(3, 6)$

(c) $y\text{-intercept} = \frac{3}{2}$

6. (a) (i) $-8x + 8y$ (ii) $6x + 5y$

(b) (i) $6hx + 5hy$ (ii) $-8kx + 8ky$

(c) $h = \frac{8}{11}, k = \frac{5}{11}$